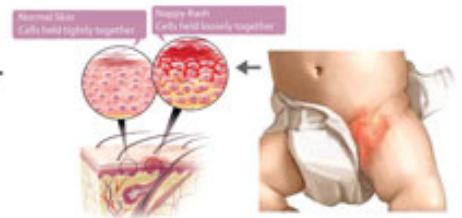


VICTORY OVER NAPPY RASH



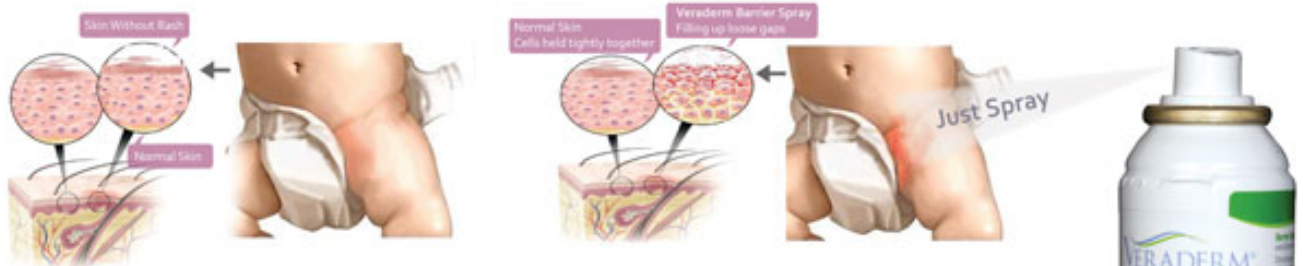
Nappy Rash occurs in area under the nappy. The combination of a wet and dirty nappy can produce ammonia from the breakdown of urine by bacteria which severely irritates the skin.



VERADERMTM

BARRIER SPRAY

Innovative spray having dual mechanism of action with Paraffins acting on top of skin forming a barrier and in depth as an emollient with additional benefits of Aloe Vera



Frequent application of Veraderm Barrier Spray, protects skin from further damage.

Simply spray when changing Nappy- Say no to Rash



www.suttonhealth.com

